

SCHEDULE			
PART	LOT / BLOCK	PLAN	PIN
1	PART OF LOTS 133 AND 134 PART OF BLOCK Q	PLAN 585 PLAN 564	PART OF PIN 64103-0176(LT)
2	ALL OF LOTS 135, 136, 137 AND 138, AND PART OF LOTS 133, 134 AND 139 PART OF BLOCK Q	PLAN 585 PLAN 564	

PLAN 59R-17992

Received and deposited

February 22nd, 2024

Todd Bondy

Representative for the
Land Registrar for the
Land Titles Division of
Niagara South (No.59)

PLAN OF SURVEY OF
LOTS 133, 134, 135, 136, 137
AND 138, AND PART OF LOT 139
PLAN 585
AND PART OF BLOCK Q - PLAN 564
CITY OF WELLAND
REGIONAL MUNICIPALITY OF NIAGARA
SCALE 1 : 300

0 1 2 3 4 5 10 15 20 30 METRES
DONALD G. CHAMBERS
ONTARIO LAND SURVEYOR

THE INTENDED PLOT SIZE OF THIS PLAN IS 862mm IN WIDTH BY 424mm IN HEIGHT WHEN PLOTTED AT A SCALE OF 1:300

METRIC NOTE
DISTANCES AND COORDINATES SHOWN ON THIS PLAN ARE IN METRES AND CAN BE CONVERTED TO FEET BY DIVIDING BY 0.3048.

LEGEND

■	DENOTES	SURVEY MONUMENT FOUND
□		SURVEY MONUMENT SET
SIB		STANDARD IRON BAR
SSIB		SHORT STANDARD IRON BAR
IB		IRON BAR
MEAS		MEASURED
WIT		WITNESS
OU		ORIGIN UNKNOWN
N/S/E/W		NORTH/SOUTH/EAST/WEST
PIN		PROPERTY IDENTIFICATION NUMBER
P1		DEPOSITED PLAN 59R-4946
P2		DEPOSITED PLAN 59R-5602
P3		DEPOSITED PLAN 59R-6102
MTO		MINISTRY OF TRANSPORTATION, ONTARIO
759		C. J. CLARKE, O.L.S.
WSC		WELLAND SHIP CANAL

SURVEYOR'S CERTIFICATE

I CERTIFY THAT:
1) THIS SURVEY AND PLAN ARE CORRECT AND IN ACCORDANCE WITH THE SURVEYS ACT, THE SURVEYORS ACT AND THE LAND TITLES ACT AND THE REGULATIONS MADE UNDER THEM;
2) THE SURVEY WAS COMPLETED ON THE 13th DAY OF FEBRUARY, 2024.

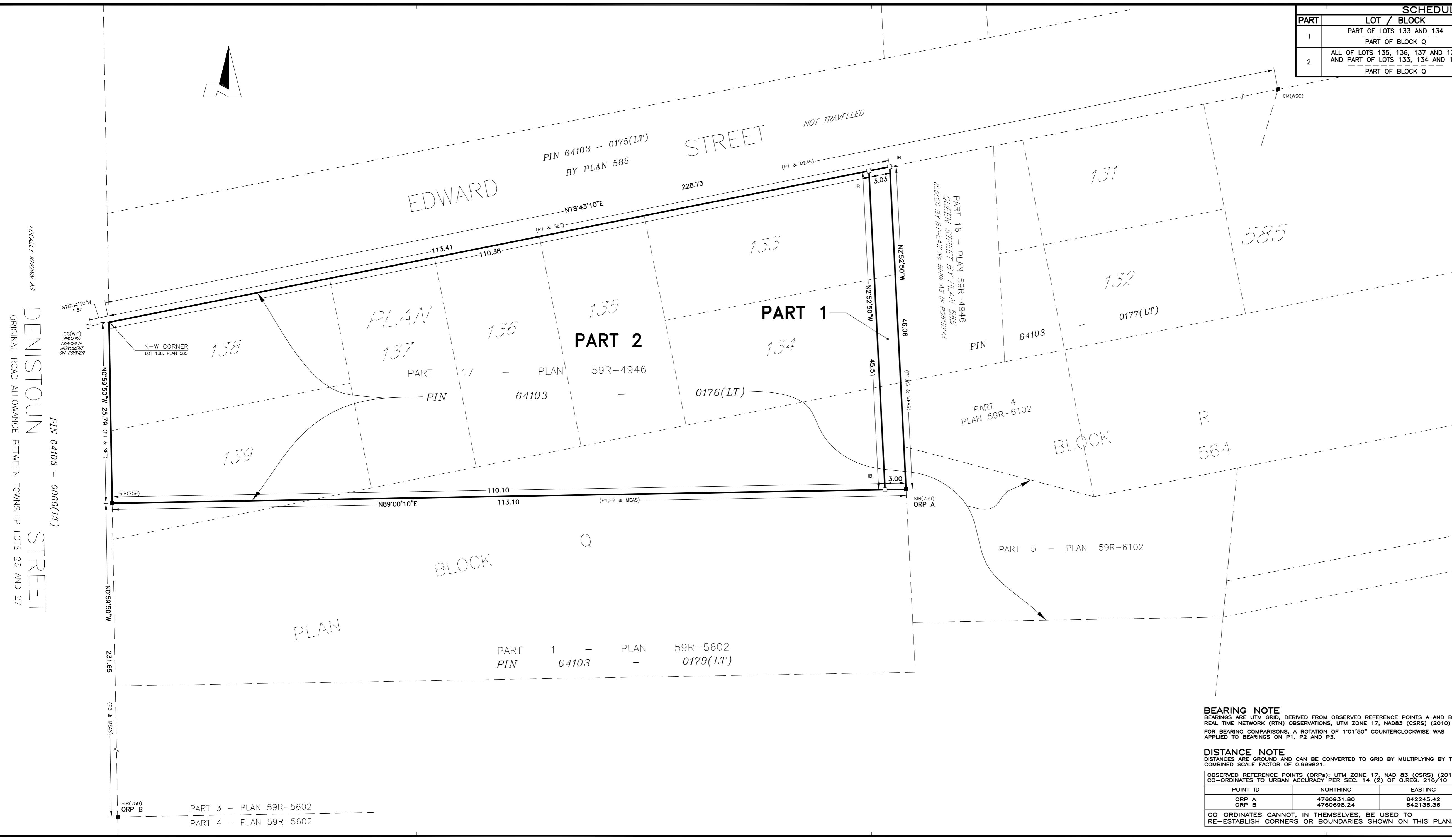
FEB. 16, 2024
DATE
DONALD G. CHAMBERS, B. Sc., O.L.S.

THIS PLAN OF SURVEY RELATES TO A.O.L.S. PLAN SUBMISSION FORM V-52315

CHAMBERS AND ASSOCIATES SURVEYING LTD

12 THOROLD ROAD EAST
WELLAND ONTARIO L3C 3T2
(905) 735-7841 / 735-7844
FAX (905) 735-7333
www.casl-surveying.com

DRAWN BY: DHT MSCAD: 24004_MS DWG: 24004_RP FILE NO: 24-04



BEARING NOTE
BEARINGS ARE UTM GRID, DERIVED FROM OBSERVED REFERENCE POINTS A AND B BY REAL TIME NETWORK (RTN) OBSERVATIONS, UTM ZONE 17, NAD83 (CSRS) (2010)
FOR BEARING COMPARISONS, A ROTATION OF 1°01'50" COUNTERCLOCKWISE WAS APPLIED TO BEARINGS ON P1, P2 AND P3.

DISTANCE NOTE
DISTANCES ARE GROUND AND CAN BE CONVERTED TO GRID BY MULTIPLYING BY THE COMBINED SCALE FACTOR OF 0.999821.

OBSERVED REFERENCE POINTS (ORP _s): UTM ZONE 17, NAD 83 (CSRS) (2010). CO-ORDINATES TO URBAN ACCURACY PER SEC. 14 (2) OF O.REG. 216/10			
POINT ID	NORTHING	EASTING	
ORP A	4760931.80	642245.42	
ORP B	4760698.24	642136.36	

CO-ORDINATES CANNOT, IN THEMSELVES, BE USED TO RE-ESTABLISH CORNERS OR BOUNDARIES SHOWN ON THIS PLAN.

ST. NIMONW 1770007
DENISTOWN STREET
ORIGINAL ROAD ALLOWANCE BETWEEN TOWNSHIP LOTS 26 AND 27
PIN 64103 - 0066(LT)

PART 3 - PLAN 59R-5602
PART 4 - PLAN 59R-5602